



JP OCEAN
UNDERWATER SERVICES
海洋联盟潜水私人有限公司

UNDERWATER SERVICES

www.jpoccean.com.sg



JOINT PACIFIC OCEAN UNDERWATER SERVICES PRIVATE LIMITED, also known as **JP OCEAN** provides complete industrial diving services. Our experienced divers are certified according to SS511 with an excellent safety record including mechanical skills to provide safe and quality maintenance works for all your underwater needs.

ATTENTION TO SAFETY IS THE KEY TO OUR SUCCESS

JOINT PACIFIC OCEAN UNDERWATER SERVICES PTE LTD. provides safe, high-quality, cost-effective services is responsive, flexible, and innovative in meeting our clients' needs and does so in an environment of ethical conduct, mutual trust, and teamwork.

Our commitment to customer service, safety, and quality has earned us a reputation that sets us apart from our competition in the diving industry.

If your vessel is passing through or calling at the port of Singapore and you require more information about our services or any other type of underwater work, please contact us to discuss your requirements.



OUR EQUIPMENT

ROV: A remotely operated vehicle is an autonomous underwater robot that is linked to a ship via cables. A ROV may be equipped with a video camera, lights, sonar, and an articulating arm. Although a ROV is not meant to replace hydrographic diver studies, it might be beneficial when divers are not accessible or diver safety is a problem.

BRUSH-KART HYDRAULIC BRUSHING MACHINE: BRUSH-KART is meant to clean large vessels quickly and efficiently, such as VLCC tankers, using as few personnel as possible. This cleaning machine cleans a 1.4-metre-wide strip at rates ranging from 0 to 50 metres per minute with each pass. Three articulated revolving brushes with a diameter of 0.5 metres and a rotating speed of around 1,200 RPM. The diver operator can change the forward speed using the metering value. The BRUSH-KART's mounted brush holder is a unique feature that allows it to operate on any vessel's tight radius while also acting as a shock absorber.

If your vessel is passing through or calling at the port of Singapore and you require more information about the aforementioned services or any other type of underwater work, please contact us to discuss your requirements.

WE ASSURE OUR BEST PERFORMANCE AT ALL TIMES!

A diver in a dark wetsuit is underwater, holding a bright flashlight that illuminates the surrounding blue water. The diver's mask and breathing apparatus are visible.

OUR COMPANY

SERVICES

A close-up view of underwater inspection equipment, including a camera and a light source, mounted on a structure. The equipment is green and black.

INSPECTION WITH REPORT & STILL PHOTOGRAPHY

We supply these Underwater Photography Services with customized services based on the client's desired need and at affordable pricing to our clients. This can alternatively be discussed as CCTV inspection or the use of a Remote Operated Underwater Vehicle (ROV), which can capture at deep drafts or late at night when vision is poor. We offer a complete inspection and testing service for the following but not limited to; Quality Assurance Inspection, In Service Inspections, Job Progress, Planned Maintenance Inspection, etc.

Do check out our website for more information!

A person wearing a grey cap and glasses is sitting at a desk, operating a computer system. The system includes a monitor displaying a video feed, a laptop, and a speaker. The person's hands are on the keyboard.

CCTV SURVEY IN RECOGNITION BY CLASS SOCIETY SURVEYORS

JOINT PACIFIC OCEAN UNDERWATER SERVICES PTE LTD. undergoes class-approved inspections on schedule and with excellent quality. After quality checks, reports with photographs will be provided as soon as possible from the inspection location. Underwater CCTV systems can also be supplied with a Remote Operated Underwater Vehicle (ROV), which can collect images in deep draft or at night when vision is limited.

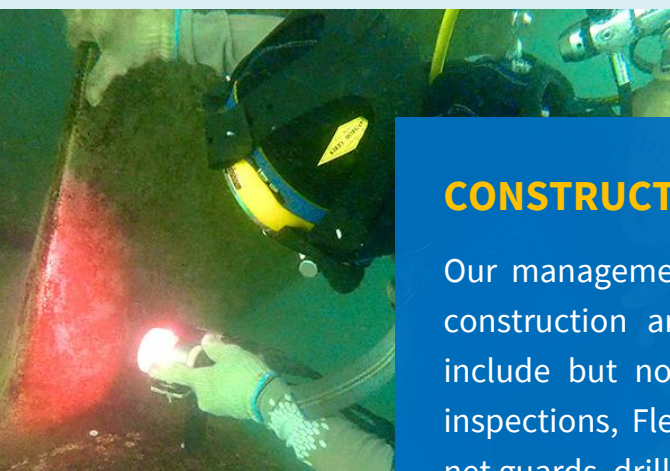


HULL CLEANING

Frictional resistance increases with fouled bottoms, resulting in increased fuel consumption and slower acceleration. Our dive boats are equipped with integrated surface supply diving equipment and a powerful underwater power washer; we also have a Semi-automatic Hydraulic Sub Brush System with revolving brushes. Our ROV specialists and integrated Remote Operated Underwater Vehicle (ROV) may be selected, and it can also be furnished with similar brushes. Our clients will also receive softcopy reports on hull cleaning as well as high-quality pictures, which are always appreciated.

POLISHING OF SHIP'S PROPELLERS

The ideal technique to propeller cleaning is JOINT PACIFIC OCEAN UNDERWATER SERVICES PTE LTD's innovative way of more regular, lighter cleaning of the propeller. Propeller surface roughness has a direct impact on propeller efficiency. When performed properly and on a regular basis, it can result in faster speeds and/or greater fuel savings.



CONSTRUCTION & SALVAGE WORKS

Our management, operation team and divers are experienced in subsea construction and the installation of subsea components. Our services include but not limited to Anode installations, Diver and ROV pipeline inspections, Flexible pipeline installation, Installations of well protectors, net guards, drill templates, etc.



OFFSHORE DIVING WORKS

We provide a full range of commercial diving services for the inshore and offshore markets, as well as saturation diving support for deep water projects. Our services include but not limited to Complete Offshore Air / Nitrox Diving Services, Ship survey and repairs, Hull cleaning, welding and burning services, etc.

If you require more information about the aforementioned services or any other type of underwater work, please contact us to discuss your requirements.

ACCREDITATIONS



CONTACT US

- ❖ Do reach out to us at the following to know more!
- ❖ QR for name card QR for website



+65 6264 6506

enquiry@jpocean.com.sg

1 Sunview Road, #08-50, Eco-Tech@Sunview, Singapore - 627615.